

*elsamec*  
gears for comfort



**“SPEEDY”  
MOTORS FOR SPEEDY DOORS  
AND FOLD UP DOORS**



**CATALOGUE**

**2021**

# SPEEDY VSF MODEL

*High speed door drives for top service and shorter opening and closing time.*

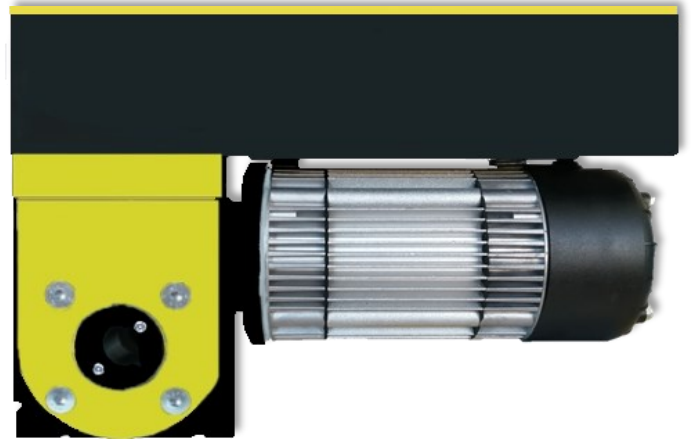
**RELIABILITY, SAFETY AND  
MADE IN ITALY QUALITY**

**OPTIMISATION OF WAREHOUSE  
SPACE**

A more efficient warehouse management thanks to the range of lifting capacity and a limited number of models and accessories available.

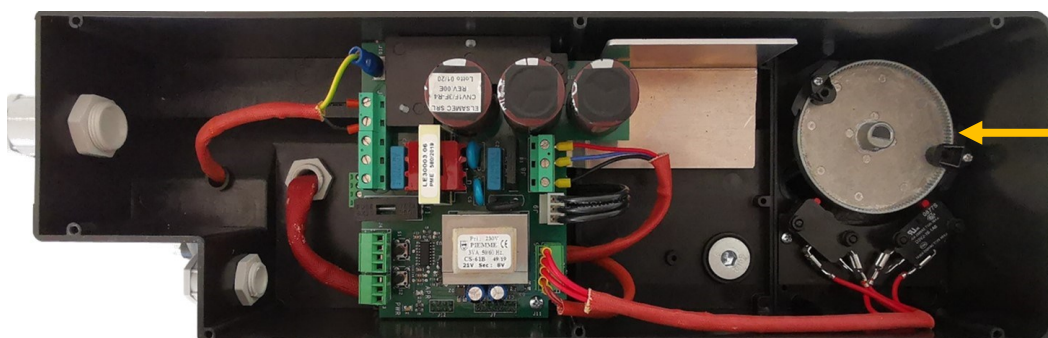
**VARYING ROLLING UP SPEEDS**

An easier programming process of all functions in order to fulfil every requirement of our customers.



**EASY TO INSTALL, USE AND SERVICE**

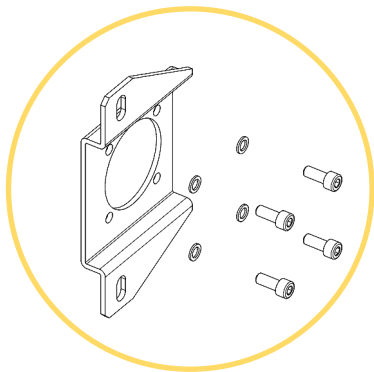
Our on-board power electronics (Acrux) is already wired and it is connected to the command board (Merak) via one single cable (CAN BUS). Therefore, the electrical connection is faster and possible mistakes are avoided.



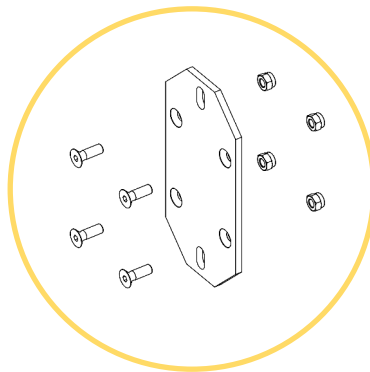
Also available with  
KOSTAL encoder

<b>SPEEDY VSF MODEL</b>	<b>4,5 T 230 V</b> with mechanical limit switch	<b>4,5 M</b> with mechanical limit switch and ACRUX LINK	<b>4,5 M</b> with digital limit switch and ACRUX LINK	<b>6,5 T 230 V</b> with mechanical limit switch	<b>6,5 M</b> with mechanical limit switch and ACRUX LINK	<b>6,5 M</b> with digital limit switch and ACRUX LINK
<b>CODE</b>	<b>74 83 00 00</b>	<b>74 86 00 00</b>	<b>74 87 00 00</b>	<b>74 93 00 00</b>	<b>74 96 00 00</b>	<b>74 97 00 00</b>
Torque (Nm)	45	45	45	65	65	65
Lifting capacity with a tube $\varnothing$ of 120 mm (kg)	75	75	75	108	108	108
Output rotation speed (rpm)	140	140	140	93	93	93
Linear speed with a tube $\varnothing$ of 120 mm (m/s)	0,88	0,88	0,88	0,58	0,58	0,58
Output speed adjustable by the limit switch (n°)	10	10	10	10	10	10
Frequency (Hz)	50	50	50	50	50	50
Voltage (V)	<sup>3 x AC</sup> 230	230	230	<sup>3 x AC</sup> 230	230	230
Power consumption (kW)	1,7	1,7	1,7	1,7	1,7	1,7
Initial power absorption (A)	12	12	12	12	12	12
Power absorption operatively (A)	7,6	7,6	7,6	7,6	7,6	7,6
Phase shifting (Cosfi)	0,95	0,95	0,95	0,95	0,95	0,95
Insulation class	F	F	F	F	F	F
% Services (s)	360	360	360	540	540	540
Max. cycles per hour (n°)	120	120	120	80	80	80
IP protection class	54	54	54	54	54	54

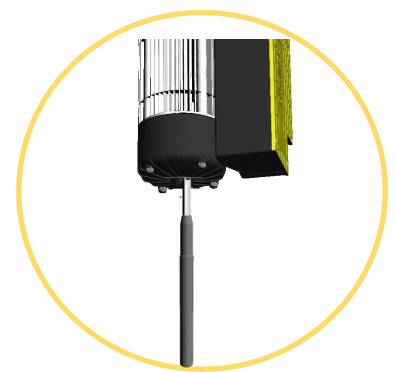
## ACCESSORIES



Mounting bracket Omega  
code **74710000**



Mounting bracket Staffa  
code **74720000**



Spindle with hex rivet nut for  
emergency operation  
code **76110004**

# SPEEDY TAURUS MODEL

*High speed door drives for top service and shorter opening and closing time.*

**RELIABILITY, SAFETY AND  
MADE IN ITALY QUALITY**

**OPTIMISATION OF WAREHOUSE  
SPACE**

A more efficient warehouse management thanks to the range of lifting capacity and a limited number of models and accessories available.

**VARYING ROLLING UP SPEEDS**

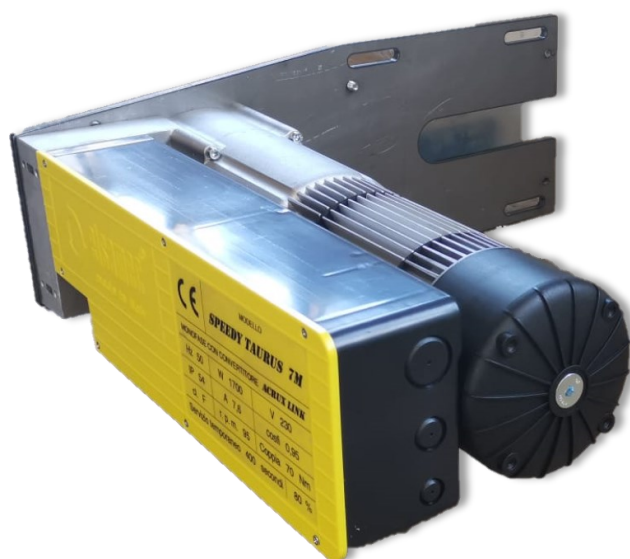
An easier programming process of all functions in order to fulfil every requirement of our customers.

**SMALL SPACE NEEDED FOR  
INSTALLATION**

The space occupied by the motor on door's side is reduced thanks to its positioning.

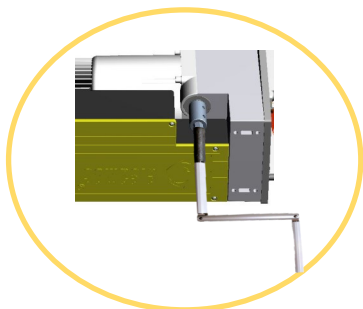
**EASY TO INSTALL, USE AND SERVICE**

Our on-board power electronics (Acrux) is already wired and it is connected to the command board (Merak) via one single cable (CAN BUS). Therefore, the electrical connection is faster and possible mistakes are avoided.

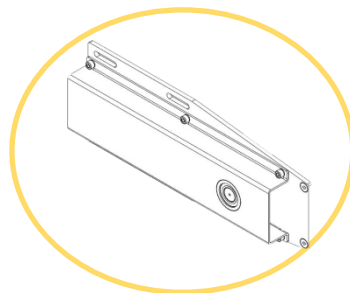


<b>SPEEDY TAURUS MODEL</b>		<b>5 T 230V</b>	<b>5 M with ACRUX LINK</b>	<b>7 T 230V</b>	<b>7 M with ACRUX LINK</b>	<b>11 T 230V</b>	<b>11 M with ACRUX LINK</b>
<b>CODE</b>		<b>74080000</b>	<b>74080040</b>	<b>74080050</b>	<b>74080090</b>	<b>74090000</b>	<b>74090040</b>
Torque (Nm)		50	50	70	70	110	110
Lifting capacity with a tube Ø of 120 mm (kg)	Bracket 1,5:1 R.	55	55	77	77	122	122
	Bracket 1:1 R.	83	83	116	116	183	183
	Bracket 1:1,5 R.	124	124	174	174	274	274
Output rotation speed (rpm)	Bracket 1,5:1 R.	216	216	142	142	94	94
	Bracket 1:1 R.	144	144	95	95	63	63
	Bracket 1:1,5 R.	96	96	63	63	42	42
Linear speed with a tube Ø of 120 mm (m/s)	Bracket 1,5:1 R.	1,35	1,35	0,9	0,9	0,6	0,6
	Bracket 1:1 R.	0,9	0,9	0,6	0,6	0,4	0,4
	Bracket 1:1,5 R.	0,6	0,6	0,4	0,4	0,26	0,26
Output speed adjustable by the limit switch (n°)	Bracket 1,5:1 R.	22	22	22	22	22	22
	Bracket 1:1 R.	15	15	15	15	15	15
	Bracket 1:1,5 R.	10	10	10	10	10	10
% Services ( s)	Bracket 1,5:1 R.	230	230	350	350	530	530
	Bracket 1:1 R.	350	350	530	530	800	800
	Bracket R. 1:1,5	525	525	795	795	1200	1200
Max. cycles per hour (n°)	Bracket 1,5:1 R.	180	180	120	120	90	90
	Bracket 1:1 R.	120	120	80	80	60	60
	Bracket 1:1,5 R.	80	80	200	200	40	40
Frequency (Hz)		50	50	50	50	50	50
Voltage (V)		3 x AC		3 x AC		3 x AC	
		230	230	230	230	230	230
Power consumption (kW)		1,7	1,7	1,7	1,7	1,7	1,7
Initial power absorption ( A)		12	12	12	12	12	12
Power absorption operatively (A)		7,6	7,6	7,6	7,6	7,6	7,6
Phase shifting (Cosfi)		0,95	0,95	0,95	0,95	0,95	0,95
Insulation class		F	F	F	F	F	F
IP protection class		54	54	54	54	54	54

## ACCESSORIES



Articulated handle for emergency operation  
**code 76110001**

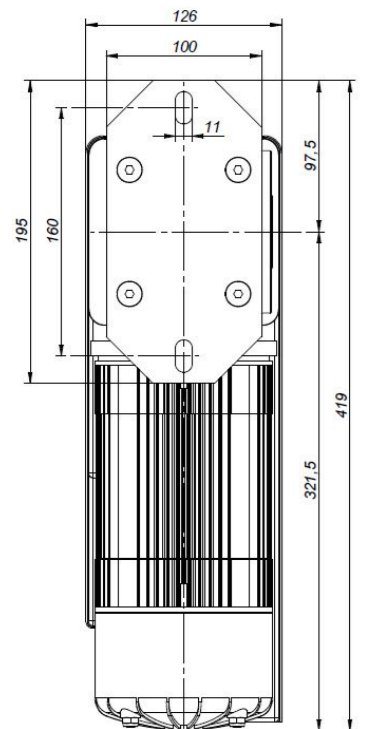
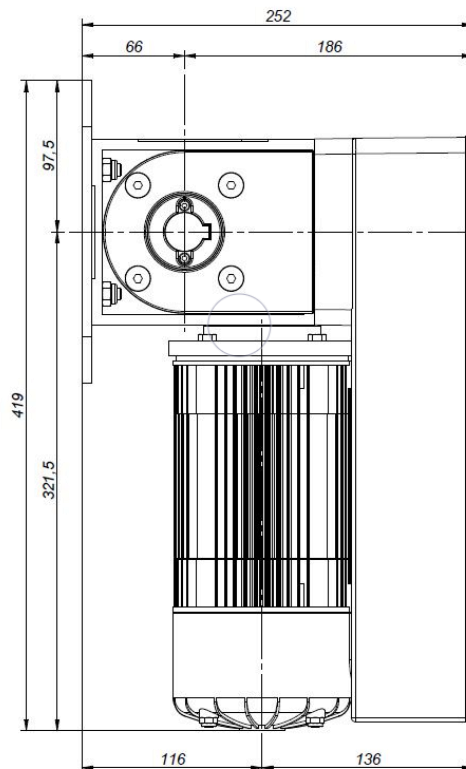
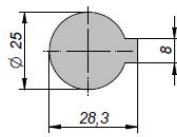
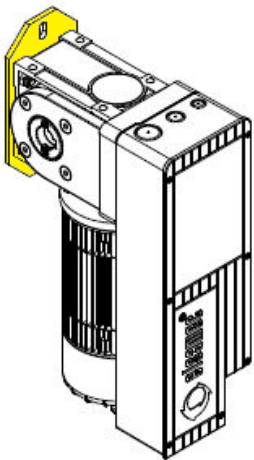
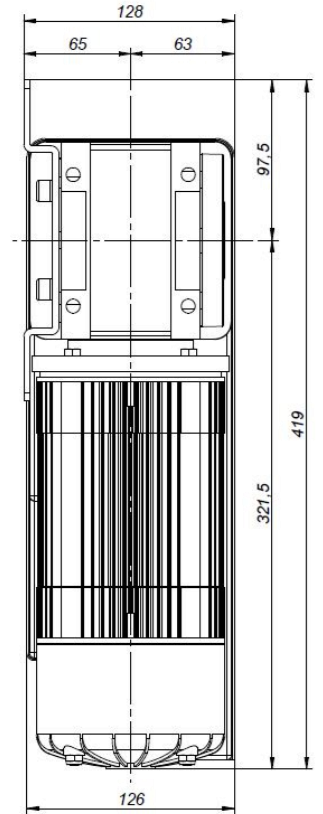
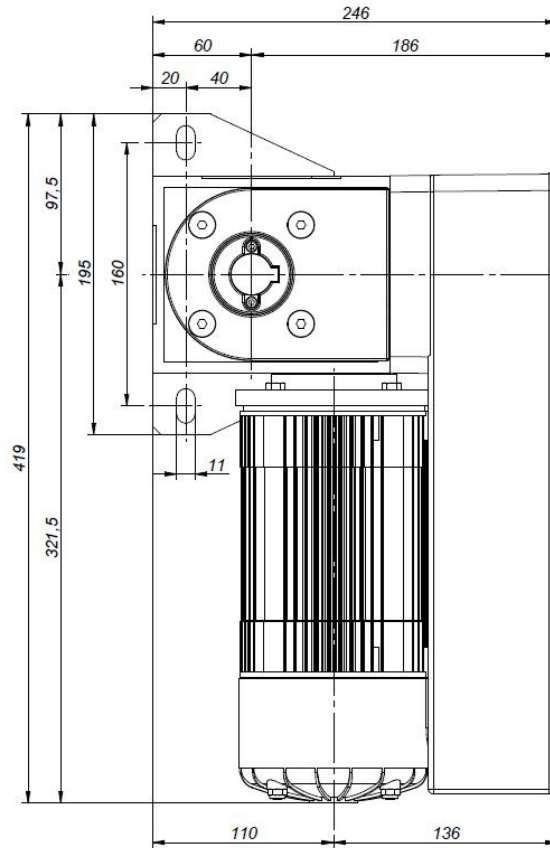
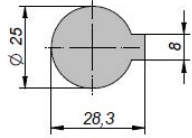
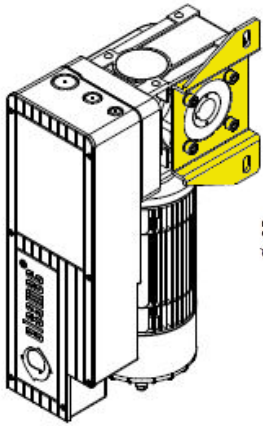


Bracket 1,5:1 Speedy Taurus  
**code 76211500**

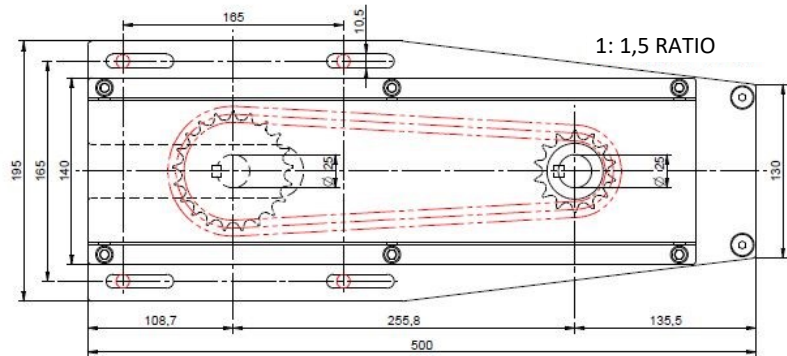
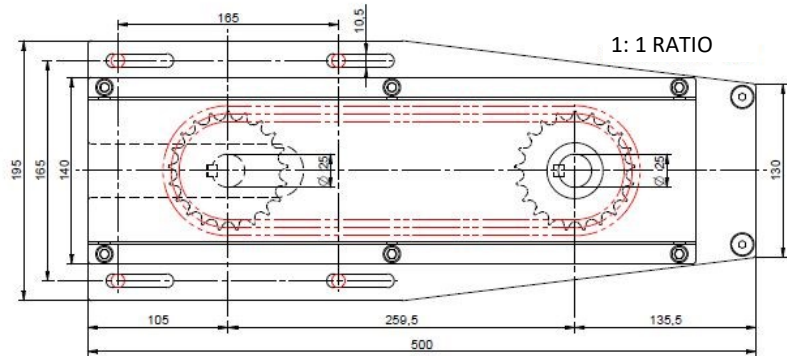
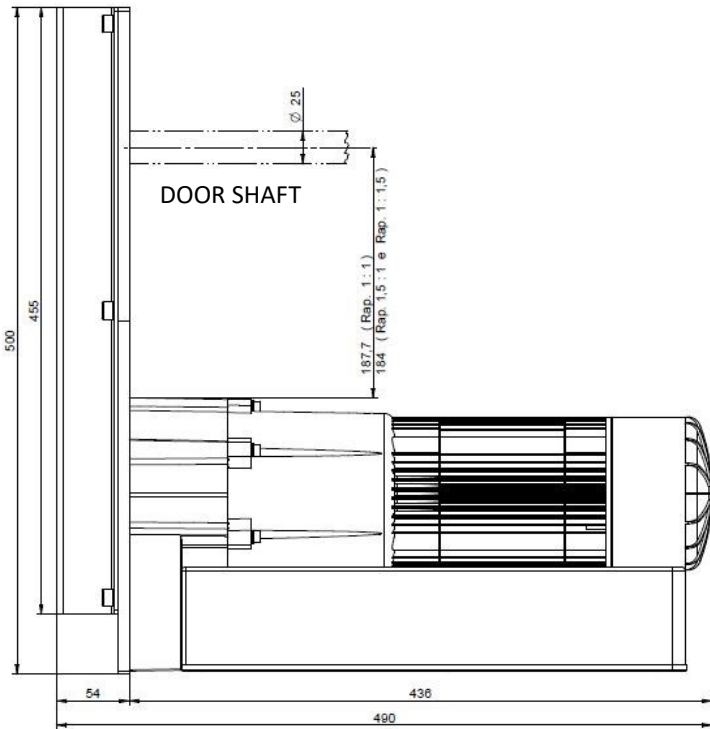
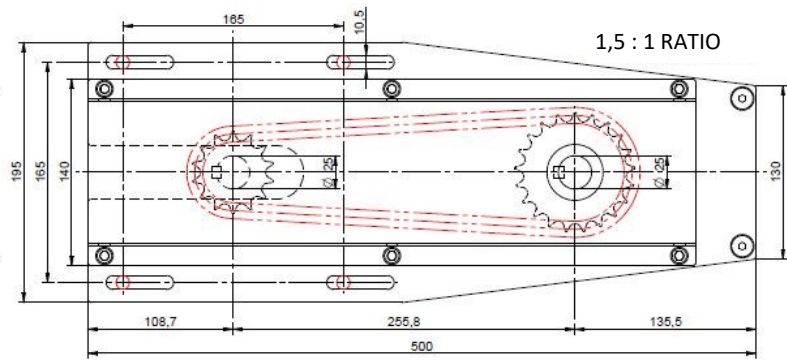
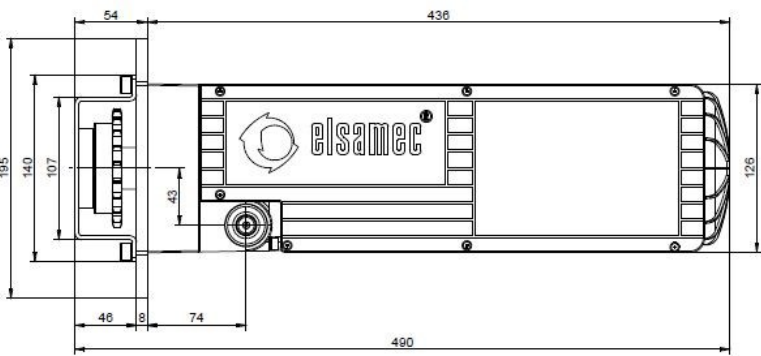
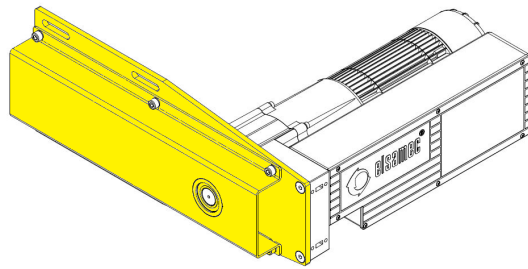
Bracket 1:1 Speedy Taurus  
**code 76211000**

Bracket 1:1,5 Speedy Taurus  
**code 76211500**

# TECHNICAL DRAWING SPEEDY VSF



# TECHNICAL DRAWING SPEEDY TAURUS



## SPEEDY VSF MOTOR



## SPEEDY TAURUS MOTOR



## COMMAND BOARD MERAK



Merak, created thanks to our ingenuity, is a unique electronic device that allows our customers to adjust doors' upwards and downwards speed.

This command board is therefore a combination of technological research, practical implementation and decades of experience.

Thanks to this product our customers can work safely while at the same time optimizing their time.

Merak Basic	code <b>79260001</b>
Merak Plus	code <b>79260002</b>
Merak Radio Control	code <b>79260003</b>

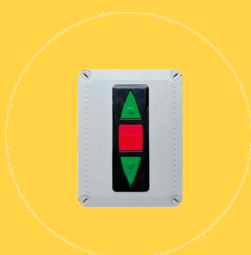
Command board for the control of the ACRUX AB LINK

- for separate upward and downward speed control
- cable connection CAN BUS

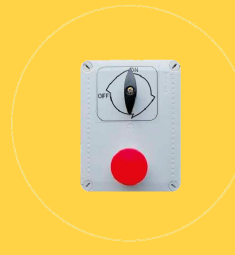
Available in three versions:

1. **BASIC**
2. **PLUS:** with control button
3. **RADIO CONTROL:** with control button, receiver with remote control

The two main accessories that can be used with our command board MERAK are:



**Rak 01**  
3 way push button box  
code **77010000**



**Rak 02**  
Control device with two-position  
switch and emergency stop.  
code **77020000**